

## Our range of services

- Manufacturing of special and custom gear units, incl. FlexoGear®, incl. controlled circulating oil lubrication Lubriflex®
- Gearbox replicas / reverse engineering
- Gearbox repair and overhaul for all manufacturers
- Spare parts management for gearbox components
- Drive system engineering from A to Z - holistic project execution, everything from a single source, from calculation and manufacturing through to commissioning
- On-site installation service 24/7
- Design and sizing of MMA (multi-motor drives)
- Mechanical and structural implementation of the drive layout
- On-site project planning and project management
- Supply of components and installation of piping systems for gearbox lubrication

## Operational equipment

- Test benches for motors and gear units
- Mobile measurement, scanning and analysis systems
- Professional painting facility
- CNC machining



## We are here for you

Drive specialists for over 30 years



**André Jagodowski**  
Chief Executive Officer  
+49 2864 9008-136  
+49 175 2222 071  
a.jagodowski@as-drives.com



**Guido Brinkmann**  
Director Engineering  
Drive Technology  
+49 2864 9008-155  
+49 175 2222 074  
g.brinkmann@as-drives.com



**Niklas Brüggemann**  
Project Manager  
Drive Technology  
+49 2864 9008-204  
+49 175 2222 050  
n.brueggemann@as-drives.com



**Christian Höltervenhoff**  
Senior Technical Sales  
Drive Technology  
+49 2864 9008-156  
+49 175 2222 724  
c.hoeltervenhoff@as-drives.com

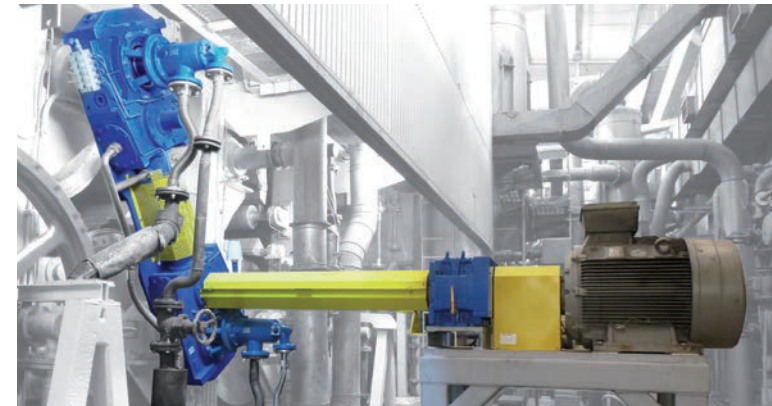
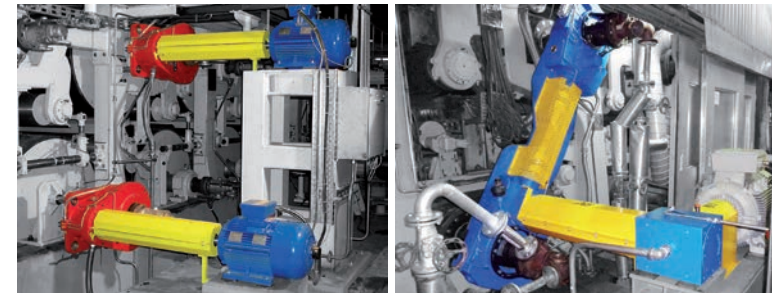


**AS Drives & Services GmbH**  
Industriestraße 30  
48734 Reken (Germany)  
[www.as-drives.com](http://www.as-drives.com)

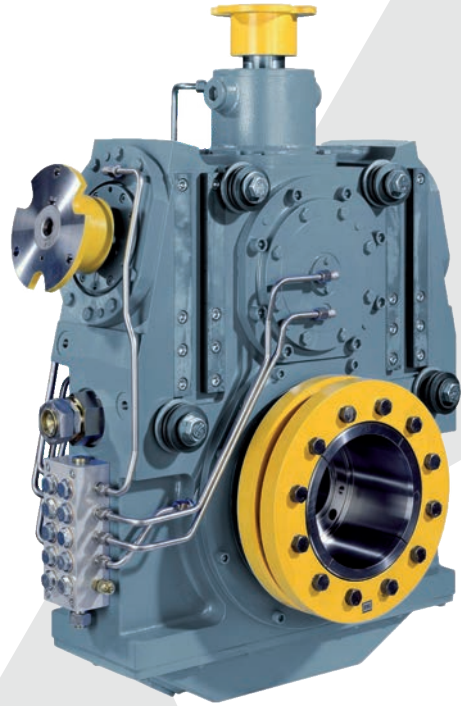


## Special gear units for dryer sections

### FlexoGear®



# The FlexoGear® gearbox



## Description

- Special hollow-shaft, shaft-mounted gearbox for dryer cylinder drives in paper machines
- Designed for operation in high temperature and humidity
- Rotary union for steam & condensate
- Replaces open or enclosed gear drives
- Connection via shrink disc on the journal; no keyway required

# FlexoGear® Series

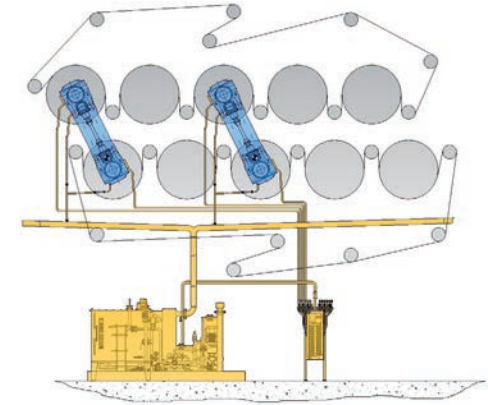


| FlexoGear® Series                        | KSZ 250     | KS 295      | KS 340                       | SZ 300       |
|--|-------------|-------------|------------------------------|--------------|
| Journal diameter max. [mm]               | 180         | 200         | 230                          | 200          |
| Rated torque (output) [Nm]               | 5.100       | 5.000       | 6.400                        | 9.500        |
| Rated power at 1,500 rpm [kW]            | 50          | 135         | 160                          | bis 160      |
| Gear ratio                               | 10,704      | 5,929       | 6,261                        | 2,8 bis 20,5 |
| Max. number of gear units in combination | 2           | 2           | 4                            | -            |
| Gear system configuration                | Single, Duo | Single, Duo | Single, Duo, Triple, Quattro | Single       |
| Installation position                    | 0-360°      | 0-360°      | 0-360°                       | 0-360°       |
| Weight [kg]                              | 335         | 550         | 745                          | 700          |

## Advantages

- Freely configurable gearbox system, unlike rigid conventional solutions
- Example configurations shown below
- Retrofit possible on almost any drive journal
- Few mechanical drive components
- No internal stress within the drive system
- No torque arm required on the machine frame
- Reduction of noise and vibrations
- Continued use of existing motors
- Energy savings

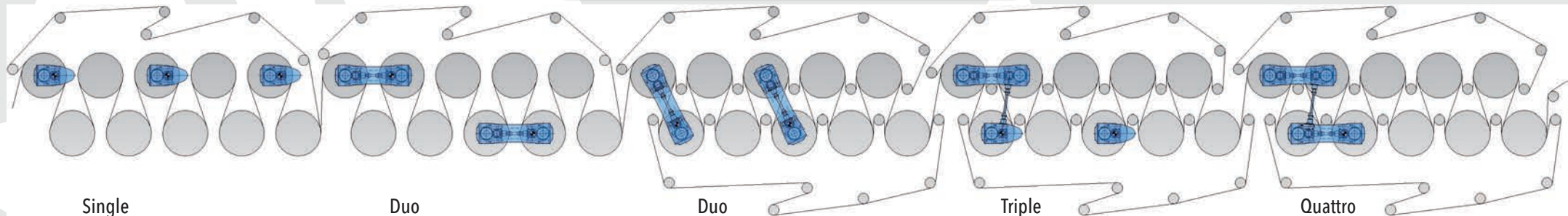
# Centralized oil lubrication



- The FlexoGear® is designed for operation with a circulating oil lubrication system.
- For this purpose, AS Drives supplies the matching products Lubriflex® and FlexoFlow®.

## References

- Installations in the paper industry
- Europe and worldwide
- Since 1997 > 700 Units
- KS 295 > 250 Units
- KS 340 > 300 Units
- SZ 300 > 150 Units



Single

Duo

Duo

Triple

Quattro