

Our range of services

- Manufacturing of permanent-magnet synchronous motors (FlexoDirect®), including controlled water-temperature regulation Cooliflex®
- End-to-end drive engineering from A to Z - complete project handling from calculation to manufacturing and commissioning
- On-site assembly service (24/7)
- Design of multi-motor drives
- Structural implementation of the drive setup
- On-site project planning and management
- Parts and assembly for water-cooling piping systems
- Fixture and tool construction
- Multi-body simulations (FEM) and fluid dynamics CAD-to-CAM and mobile CNC systems

Operating equipment

- Test benches for motors and gearboxes
- Mobile measuring, scanning, and analysis systems
- Professional paint shop
- CNC machining



We are here for you

Drive specialists for over 30 years



André Jagodowski
Chief Executive Officer
+49 2864 9008-136
+49 175 2222 071
a.jagodowski@as-drives.com



Guido Brinkmann
Director Engineering
Drive Technology
+49 2864 9008-155
+49 175 2222 074
g.brinkmann@as-drives.com



Niklas Brüggemann
Project Manager
Drive Technology
+49 2864 9008-204
+49 175 2222 050
n.brueggemann@as-drives.com



Christian Höltervenhoff
Senior Technical Sales
Drive Technology
+49 2864 9008-156
+49 175 2222 724
c.hoeltervenhoff@as-drives.com

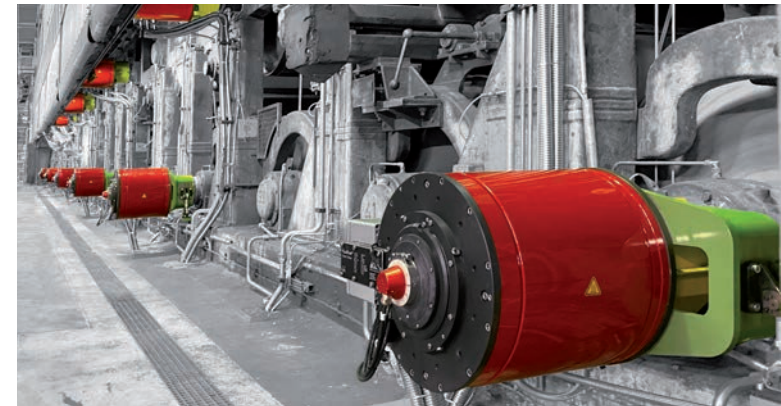
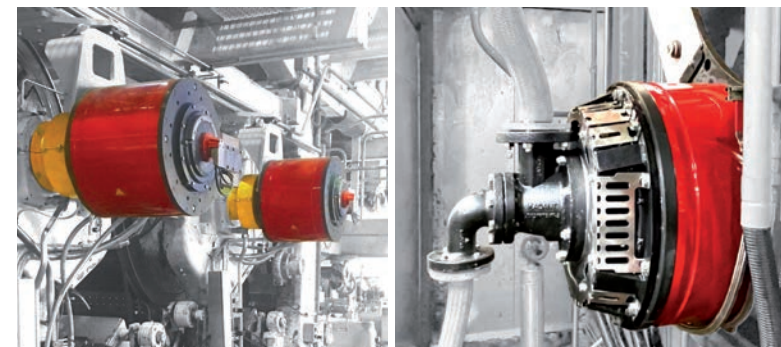
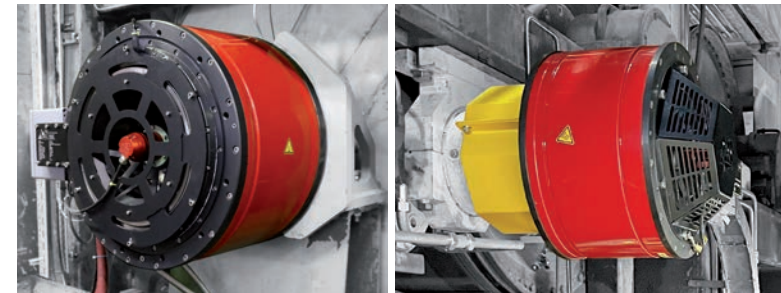


AS Drives & Services GmbH
Industriestraße 30
48734 Reken (Germany)
www.as-drives.com



Direct drives for dryer sections

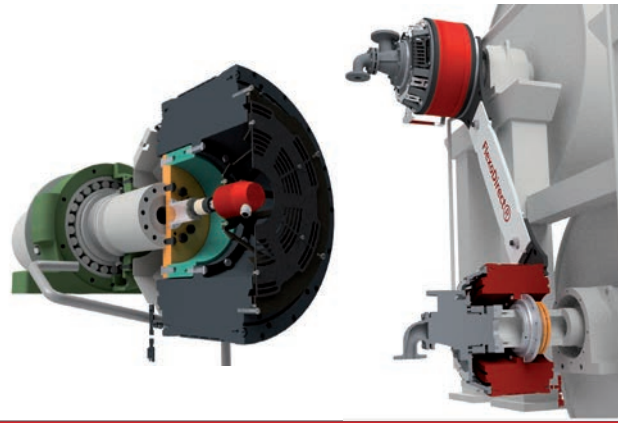
FlexoDirect®



FlexoDirect® direct drive

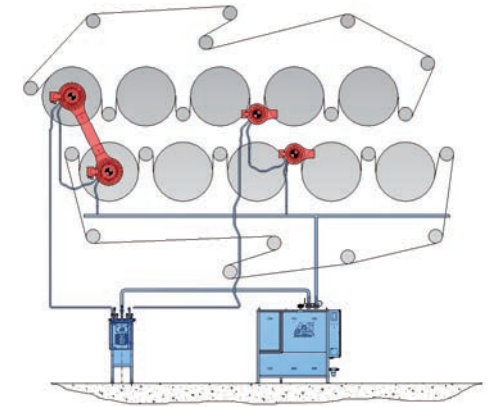


FlexoDirect® motor series



FlexoDirect® Series	F_09	F_07	F_05	F_03
Outer diameter [mm]	900	700	500	300
Torque 0 to ... [Nm]	12.500	8.500	5.500	1.000
Drehzahl 0 bis ... [min-1]	450	500	750	1.000
Voltage 230 VAC to ... [V]	690	690	690	690
Installation with rotary union	x	x	x	-
Motor available in shaft-mounted and foot-mounted versions	x	x	x	x
Hollow shaft for journal up to [mm]	350	350	180	-

Motor temperature control



- The FlexoDirect® is designed for operation with a water-based temperature control system
- For this purpose, AS Drives supplies the products Cooliflex® and FlexoFlow®

Description

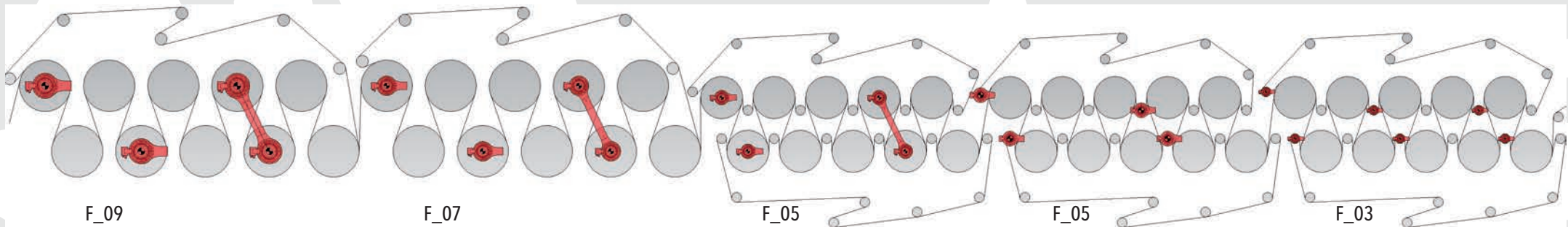
- Specifically developed for driving dryer cylinders and guide rollers in paper machines
- Permanent magnet synchronous motor, water-cooled / insensitive to contamination
- Operation at high ambient temperatures and air humidity
- Rotary joint for steam & condensate
- Replaces open or enclosed gear drives

Advantages

- Reduction of wear, noise and vibration
- Prevention of web breaks by dragging the cylinders over the fabric
- Installation inside the machine hood at the journal
- Space-saving design, no openings in the hood, unobstructed passages
- No torque arm required on the machine frame due to mutual support of two motors
- Energy savings

References

- Installations in the paper industry
- Since 2010: more than 300 units installed
- In dryer sections
e.g. VAC rolls, dryer cylinders, guide rollers
- Installations on drive side as well as tending side
- With or without rotary joint
- Hollow shaft or solid shaft design
- Available as foot-mounted or shaft-mounted version



F_09

F_07

F_05

F_05

F_03